



Manufacturer of shut-off and control valves

## TECHNICAL DATA SHEET

**Wedge gate valve ELEPHANT GVWR2134M-2W-F-OST  
DN50-300 16/25 bar steel, flanged, with OST-flange  
and round stem under the electric actuator.**



+34 900 433 073, [sales@valveelephant.com](mailto:sales@valveelephant.com)  
Carrer d'Aragó,264,3-1,08007 Barcelona, Spain

## 1. GENERAL PRODUCT INFORMATION

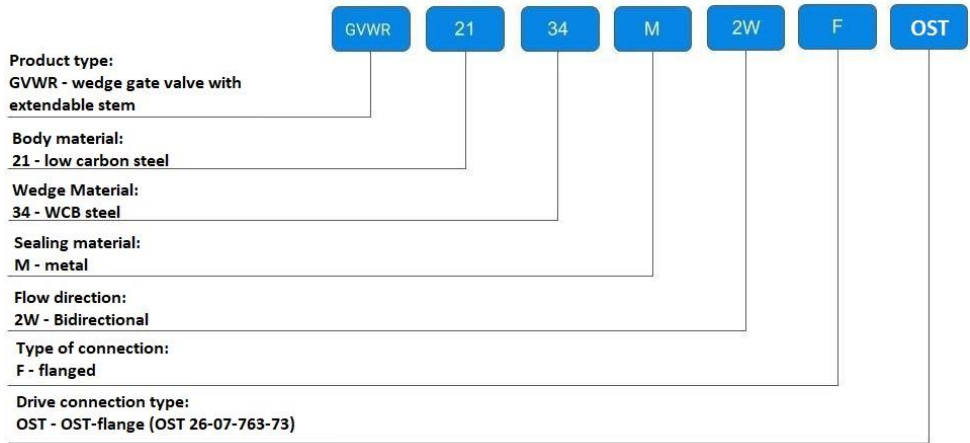
1.1. Product Name: Wedge gate valve ELEPHANT GVWR2134M-2W-F-OST DN50-300 16/25 bar steel, flanged, with OST-flange and round stem under electric actuator.

1.2. Purpose: The wedge gate valve is designed for installation as a shut-off device on pipelines for transportation of water, steam, oils, in relation to which the materials used in the gate valve are corrosion-resistant.

1.3. Operating principle: Wedge connected with spindle is lowered or raised depending on the direction of rotation of the handwheel or shaft of the electric drive, gearbox, closing or opening the passage section of the gate valve body.



## 1.4. Deciphering of the designation:



## 2. BASIC TECHNICAL DATA AND CHARACTERISTICS

Table 1

Nominal diameter DN, mm	50 - 300
Working pressure, bar	16 or 25
Working medium temperature t, °C	-30 to 425
Working medium	water, steam, oil
Flow direction	double-sided
Control type	under electric actuator
Pipeline connection	flanged
Body material	WBC steel
Wedge material	WBC steel
Application areas	heating and water supply systems; compressed air pipelines; steam plants; industrial pipelines.



### 3. BASIC MATERIALS

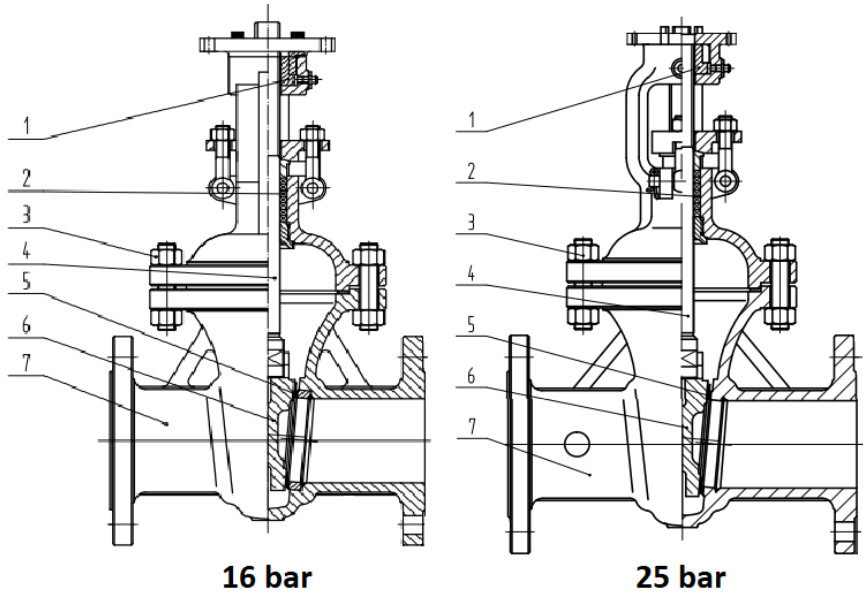


Table 2

No	Part name	Material
1	Spindle nut	brass
2	Seal	graphite
3	Bolt/nut	St35
4	Stem	2cr13 steel
5	Seat	WCB+D507
6	Wedge	WCB+D507MO
7	Housing	WBC steel



#### 4. WEIGHT AND DIMENSIONAL PARAMETERS

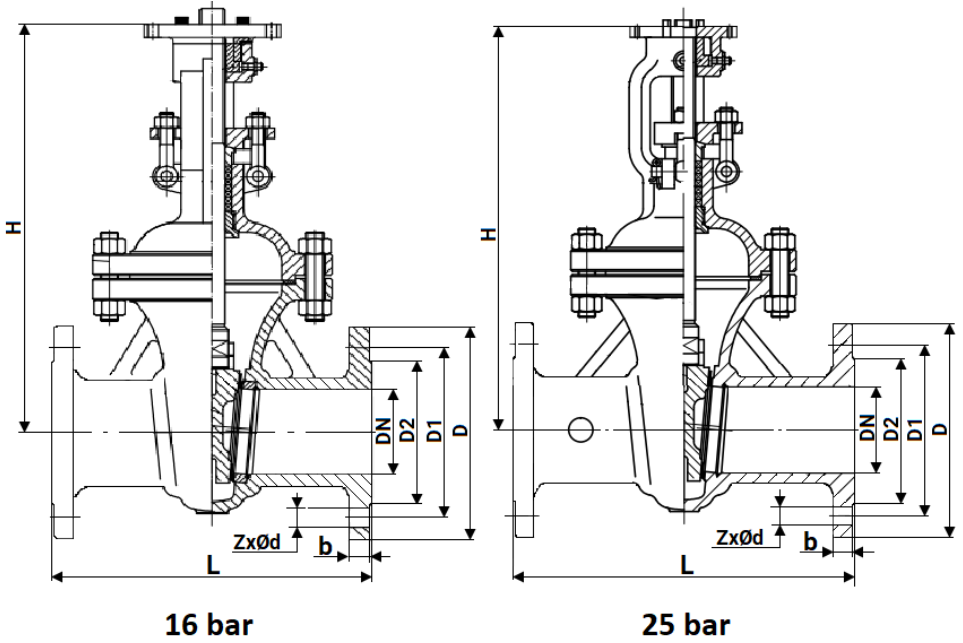


Table 3

DN	L, mm		D, mm		D1, mm		D2, mm		b, mm		ZxØd, mm		Weight, kg	
	16 bar	25 bar	16 bar	25 bar	16 bar	25 bar	16 bar	25 bar	16 bar	25 bar	16 bar	25 bar	16 bar	25 bar
50	180	250	160	160	125	125	100	100	18	18	4-18	4-18	15	21
80	210	280	195	195	160	160	135	135	22	20	4-18	8-18	25	30
100	230	300	215	230	180	190	155	160	22	22	8-18	8-23	35	40
150	280	350	280	300	240	250	210	218	24	30	8-23	8-25	65	76
200	330	400	335	260	295	310	265	278	26	34	12-23	12-25	100	130
250	450	450	405	425	355	370	320	332	30	36	12-25	12-30	190	205
300	500	500	460	485	410	430	375	390	30	40	12-25	16-30	260	300



Table 4

DN	H, mm	
	16 bar	25 bar
50	240	240
80	340	340
100	440	430
150	680	670
200	800	800
250	960	950
300	1 120	1 100

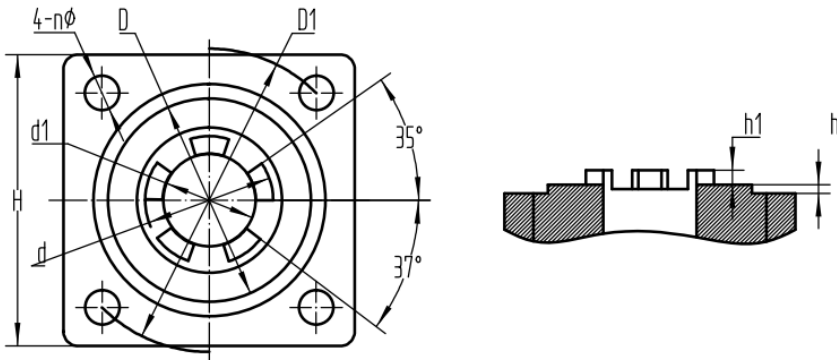


Table 5. Seating dimensions for electric actuator for gate valve 16 bar

	type	n	HxH	D	D1	d	d1	h	h1
DN50/80/100/150	A	M12	100x100	70	104	44	32	3	5
DN200/250/300	Б	M12	122x122	108	135	58	45	7	8

Table 6: Seating dimensions for electric actuator for gate valve 25 bar

	type	n	HxH	D	D1	d	d1	h	h1
DN50/80/100/150	A	M12	100x100	70	104	44	32	3	5
DN200/250	Б	M12	122x122	108	135	58	45	7	8
DN300	B	Ø22	200x200	155	220	84	70	10	10



Table 7. Torques for the gate valve 16 bar

DN	50	80	100	150	200	250	300
Torque, Nm	90	135	135	180	270	270	405

Table 8: Torques for the gate valve 25 bar

DN	50	80	100	150	200	250	300
Torque, Nm	90	135	180	270	270	270	545



## 5. INSTALLATION AND OPERATING INSTRUCTIONS

5.1. To installation, operation and maintenance of gate valves are allowed personnel who have studied the device of the gate valve, safety rules, requirements of the manual for installation, adjustment, operation and maintenance, certified for the relevant type of work.

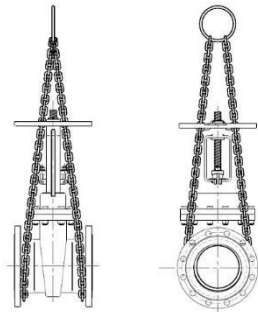
5.2. Gate valves should be installed on pipelines for media and parameters specified in the product passport.

5.3 Before installation it is necessary to remove the plugs and make the gate valve preservation with a clean rag moistened with white spirit, gasoline or other, blow internal surface with clean air (in accordance with the order established at the enterprise). The pipeline should be thoroughly cleaned from dirt, sand, scale, etc.

5.4. The flanges on the pipeline shall be installed without misalignment. The pipeline shall be secured and fully unloaded by the time of installation of the gate valve.

5.5. For ease of maintenance and inspection, as well as to ensure the best flushing of dirt from under the wedge of the gate valve when closing - should be installed in the following working positions:

- Vertical - on horizontal and inclined pipes;
- Horizontal - only on vertical pipes.



*Correct slinging of the gate valve*

5.6. Before installing the gate valve in the pipeline it is necessary to set the actuator and the gate valve to work together according to the actuator manufacturer's instructions:

- Check the installation or mount the actuator with the gate valve;
- When installing the gate valve with actuator in any position other than vertical, the actuator must have its own supports;
- Installation of the actuator under the gate valve is prohibited;
- Adjust the limit switches and stroke limiters for the "open" and "closed" positions, the disc and seat should be coated with silicone grease to avoid dry running;
- Perform several cycles of test opening-closing of the gate valve using the handwheel.;





- If the gate valve opens and closes normally when opened by the handwheel, connect to the power and control networks and perform several test opening-closing cycles with the electric actuator.

5.7. Before starting up the system with installed gate valves immediately after installation, all gate valves must be opened and the pipelines flushed.

5.8. Tightness tests should be carried out in accordance with the procedure established at the enterprise.

5.9. During operation it is necessary to carry out periodic inspections (routine work) within the terms established by the operating organization, depending on the operating modes of the system.

5.10. During inspection check: the general condition of the gate valve, the threaded part of the spindle, which should be lubricated, the condition of bolted connections, tightness of the gasket connection and gland seal.

5.11. To ensure labor safety it is strictly forbidden to perform works on defects elimination in the presence of working medium pressure in the pipeline.

5.12. It is not allowed to use wrenches larger in size than it is required for fasteners.

5.13. **ATTENTION:** During operation, commissioning works it is not allowed to use the gate valve as a regulating (throttling) device.



## **6. TRANSPORTATION AND STORAGE CONDITIONS**

6.1. Transportation and storage conditions - in accordance with the procedure established at the enterprise.

6.2. Gate valves are transported in containers in accordance with the procedure established at the enterprise and secured against possible movements with the wedge lowered to the stop. It is allowed to transport without packing in case of absence of shock loads.

6.3. Mechanical damage and contamination of internal surfaces of gate valves and sealing surfaces of flanges during transportation are not allowed.

6.4 In case of delivery of gate valves with mating flanges during transportation it is allowed to remove the latter, putting them together with fasteners in one container with the gate valve.

6.5. Gate valves should be stored in dry warehouses, protected from direct sunlight and removed at least 1 m. from heat-emitting devices, as well as not exposed to oil, gasoline.

6.6. Passage openings should be closed with plugs.

6.7. Gate valves in long-term storage are subject to periodic inspection at least once a year. In case of violation of preservation make preservation again. Apply preservation lubricant on degreased clean and dry surface of parts. Degreasing should be performed with a clean rag soaked in gasoline.

## **7. UTILIZATION**

7.1. The product is disposed of in accordance with the procedure established at the enterprise (remelting, burial, resale).

7.2. Before sending the valve for disposal, the residual working medium shall be removed from the valve. Methods of removal of the working medium and decontamination of the valve must be approved in accordance with the established procedure at the company operating the valve.



## 8. WARRANTY OBLIGATIONS

8.1. Warranty period - 12 months from the date of commissioning, but not more than 18 months from the date of sale.

8.2. The warranty applies to equipment installed and used in accordance with the installation instructions and product specifications described in this data sheet.

8.3. The manufacturer guarantees compliance of the product with safety requirements, provided that the consumer complies with the rules of transport, storage, installation and operation.

8.4. The warranty covers all defects caused by the fault of the manufacturer.

8.5. The warranty does not apply:

- parts and materials of the product subject to wear and tear;
- for cases of damage caused by:
  - modifications to the original design of the product;
  - violation of general installation recommendations;
  - faults caused by improper maintenance and storage; improper operation and use of the equipment.

## 9. WARRANTY TERMS

9.1. Claims to the quality of the goods may be made during the warranty period.

9.2. Defective products are repaired or exchanged for new ones free of charge during the warranty period. ELEPHANT decides whether to replace or repair the product. The replaced product or its parts resulting from the repair shall become the property of 'ELEPHANT'.

9.3. Costs related to dismantling, installation and transport of the defective product during the warranty period shall not be reimbursed to the Buyer.

9.4. If the claim is unfounded, the Buyer shall pay the costs of diagnostics and expertise of the product.

9.5. Products are accepted for warranty repair (as well as for return) fully assembled.



## WARRANTY CARD № \_\_\_\_\_

№	Product Name	Packs

Name and address of the trading organisation \_\_\_\_\_

Date of sale \_\_\_\_\_ Seller's signature \_\_\_\_\_

Stamp or seal of the trading organisation \_\_\_\_\_ Acceptance stamp \_\_\_\_\_

I agree with the terms and conditions of the warranty:

Buyer \_\_\_\_\_ (signature)

Warranty period - 12 months from the date of commissioning, but not more than 18 months from the date of sale.

For warranty repairs, complaints and product quality claims, please contact ELEPHANT at: Carrer d'Aragó,264,3-1,08007 Barcelona, Spain. E-mail address: sales@valveelephant.com.

When making a complaint about the quality of goods, the buyer shall present the following documents:

1. A free-form application, which shall specify:
  - name of the organisation or full name of the buyer, actual address, contact telephone numbers;
  - name and address of the organisation that carried out the installation;
  - basic parameters of the system in which the product was used;
  - a brief description of the defect.
2. Document confirming the purchase of the product (delivery note, receipt)..
3. Act of hydraulic test of the system in which the product was installed.
4. This completed warranty card.

A note on the return or exchange of goods \_\_\_\_\_

Date: « \_\_\_ » \_\_\_\_\_ 202\_\_ yr. Caption \_\_\_\_\_

