



Manufacturer of shut-off and control valves

TECHNICAL DATA SHEET

Quarter turn gearbox **ELEPHANT** RDN RQN_{x-xZ-x}



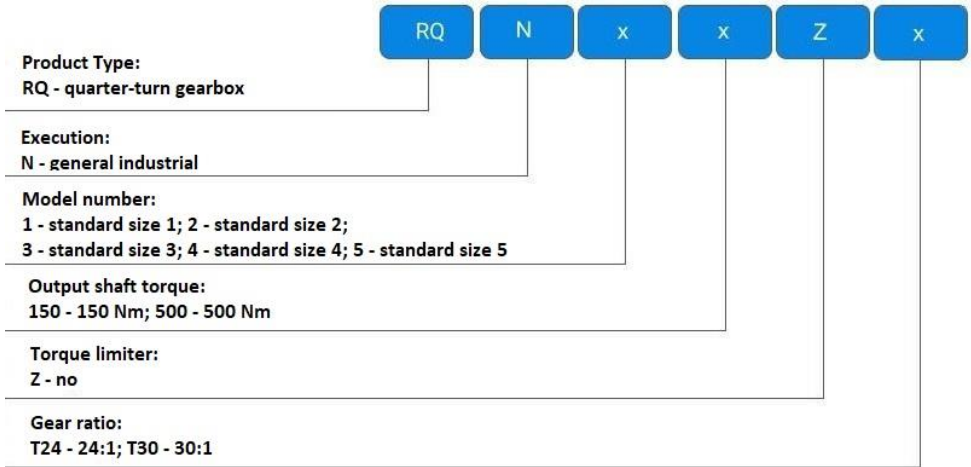
+34 900 433 073, sales@valveelephant.com
Carrer d'Aragó,264,3-1,08007 Barcelona, Spain

1. GENERAL PRODUCT INFORMATION

- 1.1. Product name: Quarter-turn gearbox ELEPHANT RDN RQN_x-xZ-x.
- 1.2. The manufacturer (supplier): "ELEPHANT". Carrer d'Aragó,264,3-1,08007 Barcelona, Spain.
- 1.3. Purpose: The quarter-turn gearbox allows manual setting of the required positioning of the shut-off valve by a quarter turn, acting as an alternative to pneumatic, electric or hydraulic quarter-turn actuators.



1.4. Deciphering the designation:



2. BASIC TECHNICAL DATA AND CHARACTERISTICS

Table 1

Operating temperature t, °C	40 to +120 (150) 60 to +120 (150) (low-temperature version)
Working environment	Filtered compressed air or non-aggressive gases, oils
Degree of protection	IP67
Working pressure, bar	16
Application	water supply, heating, ventilation, energy, air conditioning
Mounting	horizontal/vertical
Stroke adjustment	From -5° to 95°
Standard conformity	DIN / ISO 5211

3. MATERIAL INFORMATION FOR MAJOR PARTS

Table 2

Name	Material	Quantity
Handwheel	Aluminum alloy	1 pc.
Shaft	Stainless steel	1 pc.
Body	Aluminum alloy	1 pc.



4. WEIGHT AND DIMENSIONAL PARAMETERS

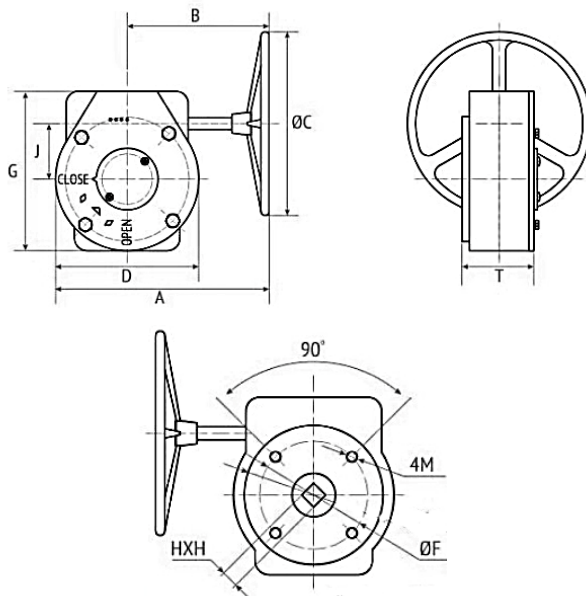


Table 3

Model	A	B	ØC	D	J	G	T	ØF	4M	HxH	Weight
	mm										kg
RQN1-150Z-T24	170	130	160	100	45	120	50	50	4-M8	9x9	2.2
RQN2-150Z-T24	170	130	160	100	45	120	50	50	4-M8	11x11	2.18
RQN3-150Z-T24	170	130	160	100	45	120	50	70	4-M8	14x14	2.2
RQN4-500Z-T30	240	160	260	130	55	150	70	100	4-M10	17x17	5.355
RQN5-500Z-T30	240	160	260	130	55	150	70	100	4-M12	22x22	6



Table 4

Model	ISO flange	Gear ratio	Output torque, Nm
RQN1-150Z-T24	F05	24:1	150
RQN2-150Z-T24	F05	24:1	150
RQN3-150Z-T24	F07	24:1	150
RQN4-500Z-T30	F10	30:1	500
RQN5-500Z-T30	F10	30:1	500

5. INSTALLATION AND CONNECTION

- 5.1. When working with the gearbox, piping and fittings must not be under pressure. During installation and maintenance, the electrical, pneumatic or hydraulic power supply to the actuators used with the gearbox must be disconnected and precautions must be taken to prevent their unintentional activation.

6. OPERATION AND MAINTENANCE

6.1 It is forbidden to develop torque on the input shaft of the gearbox that exceeds the maximum permissible input torque, including the use of any lever or other device for this purpose.

6.2 Adjustment of the limit stop is always carried out immediately after mounting the gearbox to the valve. The adjustment is always checked by manually setting the gearbox in the “closed” and “open” positions.

6.3 The suspension screw on the gearboxes is only used for lifting and necessary operations with the gearbox itself.

6.4 It is strictly forbidden to lift or carry the “valve + gearbox” assembly by any of the gearbox components.

6.5 During manual operation, turn the gearbox mechanism with the hand wheel in the direction in which the valve is opened or closed.

6.6 If the gearbox is in the end position CLOSED, but the valve has not shut off the flow, this indicates incorrect adjustment of the gearbox, or a malfunction of the valve, or some other malfunction.

6.7 It is forbidden to apply excessive force on the gearbox shaft in an attempt to turn the gearbox additionally and thereby move the shut-off valve to the desired position. Such actions may break the gearbox and the valve!

6.6 To avoid accidents, general safety requirements must be observed during installation and operation in accordance with the procedures established by the enterprise.



7. STORAGE AND TRANSPORTATION

7.1 The products shall be stored in the manufacturer's packaging in accordance with the procedure established at the enterprise.

7.2 Transportation of products shall be carried out in accordance with the procedure established at the enterprise.

8. UTILIZATION

The product is disposed of in accordance with the procedure established at the enterprise (remelting, burial, resale).



9. WARRANTY OBLIGATIONS

9.1. Warranty period - 12 months from the date of commissioning, but not more than 18 months from the date of sale.

9.2. The warranty applies to equipment installed and used in accordance with the installation instructions and product specifications described in this data sheet.

9.3. The manufacturer guarantees compliance of the product with safety requirements, provided that the consumer complies with the rules of transport, storage, installation and operation.

9.4. The warranty covers all defects caused by the fault of the manufacturer.

9.5. The warranty does not apply:

- parts and materials of the product subject to wear and tear;
- for cases of damage caused by:
 - modifications to the original design of the product;
 - violation of general installation recommendations;
 - faults caused by improper maintenance and storage; improper operation and use of the equipment.

10. WARRANTY TERMS

10.1. Claims to the quality of the goods may be made during the warranty period.

10.2. Defective products are repaired or exchanged for new ones free of charge during the warranty period. ELEPHANT decides whether to replace or repair the product. The replaced product or its parts resulting from the repair shall become the property of 'ELEPHANT'.

10.3. Costs related to dismantling, installation and transport of the defective product during the warranty period shall not be reimbursed to the Buyer.

10.4. If the claim is unfounded, the Buyer shall pay the costs of diagnostics and expertise of the product.

10.5. Products are accepted for warranty repair (as well as for return) fully assembled.



WARRANTY CARD № _____

№	Product Name	Packs

Name and address of the trading organisation _____

Date of sale _____ Seller's signature _____

Stamp or seal of the trading organisation _____ Acceptance stamp _____

I agree with the terms and conditions of the warranty:

Buyer _____ (signature)

Warranty period - 12 months from the date of commissioning, but not more than 18 months from the date of sale.

For warranty repairs, complaints and product quality claims, please contact ELEPHANT at: Carrer d'Aragó,264,3-1,08007 Barcelona, Spain_E-mail address: sales@valveelephant.com.

When making a complaint about the quality of goods, the buyer shall present the following documents:

1. A free-form application, which shall specify:
 - name of the organisation or full name of the buyer, actual address, contact telephone numbers;
 - name and address of the organisation that carried out the installation;
 - basic parameters of the system in which the product was used;
 - a brief description of the defect.
2. Document confirming the purchase of the product (delivery note, receipt)..
3. Act of hydraulic test of the system in which the product was installed.
4. This completed warranty card.

A note on the return or exchange of goods _____

Date: « ___ » _____ 202__r. Caption _____

