



Manufacturer of shut-off and control valves

## TECHNICAL DATA SHEET

**Limit switches ELEPHANT for slide gate valve  
(induction sensors ) 220V/24V**



+34 900 433 073, sales@valveelephant.com  
Carrer d'Aragó,264,3-1,08007 Barcelona, Spain

## 1. GENERAL PRODUCT INFORMATION

1.1. Product Name: Limit switches ELEPHANT for slide gate valve (induction sensors LJ12A3-4) 220V/24V.

1.2. Purpose: Induction sensor is a non-contact type sensor designed to monitor the position of objects made of metals. It is not sensitive to other materials. Induction sensors are successfully and widely used to solve many problems of process automation in production. They are manufactured with normally open and normally closed contacts, but there are variants with both types of contact simultaneously. They work by changing the parameters of the magnetic field created by the inductance coil inside the sensor.

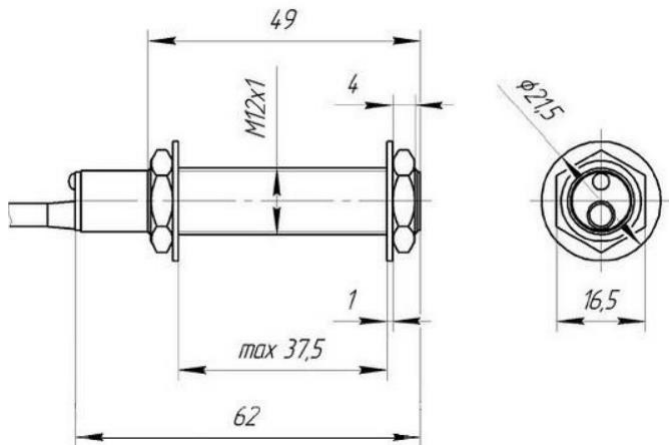


## 2. BASIC TECHNICAL DATA AND CHARACTERISTICS

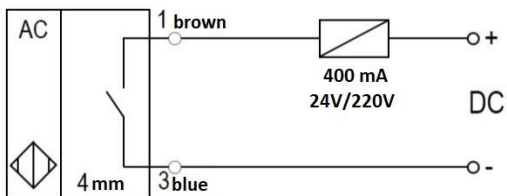
Design	cylindrical
Sensor type	induction
Supply voltage	LJ12A3-4-J/EZ - 220V AC LJ12A3-4-Z/EX - 24V DC
Current	400 mA
Output state	220V - normally open 24V - normally open
Triggering distance	4 mm
Triggering indication	have
Degree of protection	IP67



### 3. END SENSOR DIMENSION

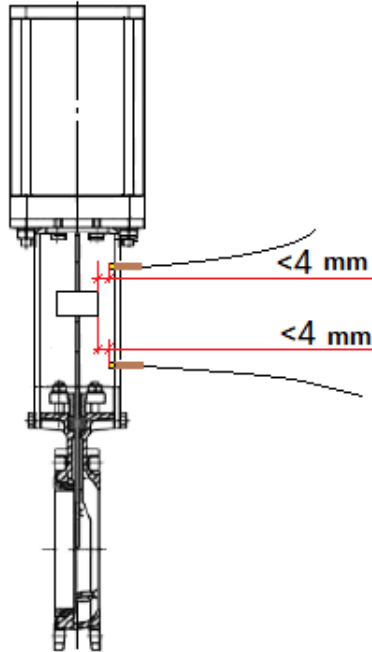


### 4. END SENSOR WIRING DIAGRAM



## 5. INSTALLATION INSTRUCTIONS

- 5.1. Before mounting, make sure that there is no damage to the sensor housing and cable.
- 5.2. Screw the sensors into the ready holes located in the gate valve rack and fix the sensors by means of two nuts on the body so that the distance from the sensor end to the stem nut in a straight line is less than 4 mm.



- 5.3. Apply power to the sensors and check their response by opening/closing the gate valve.
- 5.4 It should be taken into account that there may be a large variation of sensor response limits in case of unstable power supply. Inductive sensors are quite demanding to the quality of mains voltage.



## **6. TRANSPORTATION AND STORAGE**

6.1. Inductive sensors should be stored in packed form in closed rooms at temperatures from minus 25 °C to plus 50 °C and relative humidity not more than 80% (without condensation).

6.2 Transportation of inductive sensors in the manufacturer's packing is allowed by any kind of transport with protection from dust, rain and snow. During transportation the storage conditions should be observed.

## **7. UTILIZATION**

7.1. The product is disposed of in accordance with the procedure established at the enterprise (remelting, burial, resale).



## 8. WARRANTY OBLIGATIONS

8.1. Warranty period - 12 months from the date of commissioning, but not more than 18 months from the date of sale.

8.2. The warranty applies to equipment installed and used in accordance with the installation instructions and product specifications described in this data sheet.

8.3. The manufacturer guarantees compliance of the product with safety requirements, provided that the consumer complies with the rules of transport, storage, installation and operation.

8.4. The warranty covers all defects caused by the fault of the manufacturer.

8.5. The warranty does not apply:

- parts and materials of the product subject to wear and tear;
- for cases of damage caused by:
  - modifications to the original design of the product;
  - violation of general installation recommendations;
  - faults caused by improper maintenance and storage; improper operation and use of the equipment.

## 9. WARRANTY TERMS

9.1. Claims to the quality of the goods may be made during the warranty period.

9.2. Defective products are repaired or exchanged for new ones free of charge during the warranty period. ELEPHANT decides whether to replace or repair the product. The replaced product or its parts resulting from the repair shall become the property of 'ELEPHANT'.

9.3. Costs related to dismantling, installation and transport of the defective product during the warranty period shall not be reimbursed to the Buyer.

9.4. If the claim is unfounded, the Buyer shall pay the costs of diagnostics and expertise of the product.

9.5. Products are accepted for warranty repair (as well as for return) fully assembled.



## WARRANTY CARD № \_\_\_\_\_

№	Product Name	Packs

Name and address of the trading organisation \_\_\_\_\_

Date of sale \_\_\_\_\_ Seller's signature \_\_\_\_\_

Stamp or seal of the trading organisation \_\_\_\_\_ Acceptance stamp \_\_\_\_\_

I agree with the terms and conditions of the warranty:

Buyer \_\_\_\_\_ (signature)

Warranty period - 12 months from the date of commissioning, but not more than 18 months from the date of sale.

For warranty repairs, complaints and product quality claims, please contact ELEPHANT at: Carrer d'Aragó,264,3-1,08007 Barcelona, Spain\_E-mail address: sales@valveelephant.com.

When making a complaint about the quality of goods, the buyer shall present the following documents:

1. A free-form application, which shall specify:
  - name of the organisation or full name of the buyer, actual address, contact telephone numbers;
  - name and address of the organisation that carried out the installation;
  - basic parameters of the system in which the product was used;
  - a brief description of the defect.
2. Document confirming the purchase of the product (delivery note, receipt)..
3. Act of hydraulic test of the system in which the product was installed.
4. This completed warranty card.

A note on the return or exchange of goods \_\_\_\_\_

Date: « \_\_\_ » \_\_\_\_\_ 202\_\_ r. Caption \_\_\_\_\_

