



Manufacturer of shut-off and control valves

TECHNICAL DATA SHEET

**Float trap ELEPHANT STF2131K-T
DN15-50 16 bar steel, threaded**



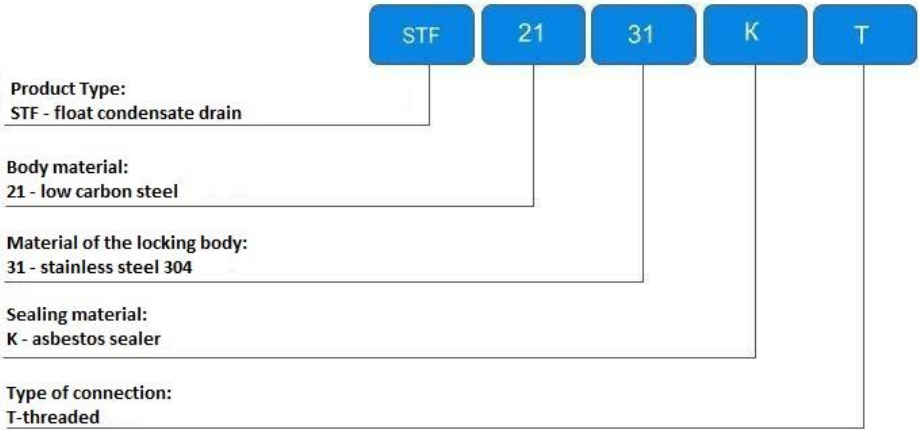
+34 900 433 073, sales@valveelephant.com
Carrer d'Aragó, 264, 3-1, 08007 Barcelona, Spain

1. GENERAL PRODUCT INFORMATION

- 1.1. Product name: Float trap ELEPHANT STF2131K-T DN15-50 16 bar steel, threaded.
- 1.2. Manufacturer (supplier): "ELEPHANT",_Carrer d'Aragó,264,3-1,08007 Barcelona, Spain.
- 1.3. Purpose: The condensate trap is designed to release condensate, air and other non-condensable gases from the steam system, as well as to delay steam until it is fully condensed.
- 1.4. Operating principle: Float-operated condensate drains drain condensate as soon as it forms. When the system starts up, air escapes through the automatic air valve into the main valve bypass, preventing it from being blocked. The hot condensate heats the thermostatic air valve capsule, which closes from the heat. The condensate then fills the trap body and the float floats up, opening the main valve and releasing the condensate. When the volume of incoming condensate decreases or disappears completely, the float lowers and presses the valve ball against the seat. When only steam is present in the condensate trap, the condensate flooded seat remains closed, preventing the passage of vapour.



1.6. Deciphering the designation:



2. BASIC TECHNICAL DATA AND CHARACTERISTICS

Table 1

Nominal diameter DN, mm	15-50
Working pressure, bar	16
Type of condensate drain	float
Operating medium temperature, °C	250-300
Maximum medium temperature, °C	350
Operating medium	saturated steam, superheated steam, compressed air, compressed gas
Connection to pipework	threaded
Maximum pressure drop, bar	10



3. BASIC COMPONENT MATERIALS

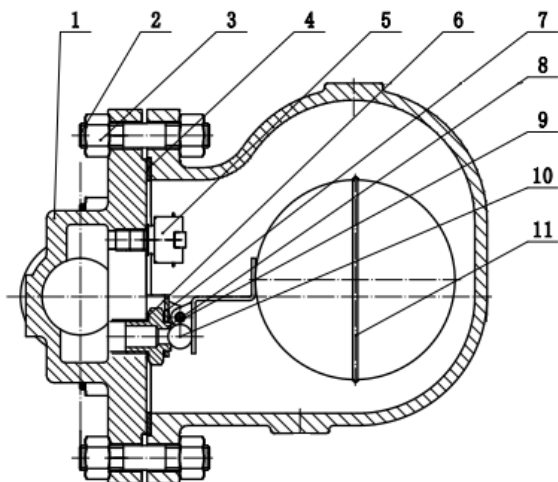


Table 2

Nº	Part name	Material
1	Enclosure	steel EN-1.0619
2	Bolt	steel 35CrMo
3	Nut	steel 45
4	Gasket	Klingerit
5	Air valve	stainless steel AISI 304
6	Gasket	steel T1
7,8,9,10	Thermal valve elements	stainless steel AISI 304
11	Float	stainless steel AISI 304



4. WEIGHT AND DIMENSIONAL PARAMETERS

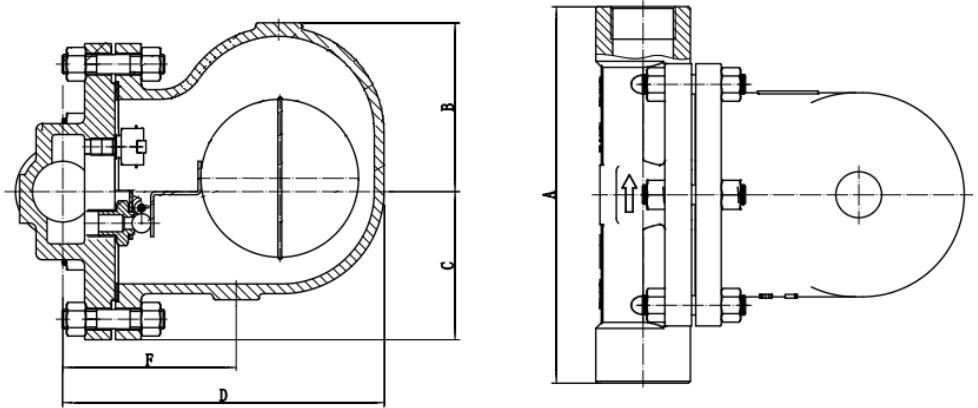


Table 3

DN	A, mm	B, mm	C, mm	D, mm	F, mm	Throughput capacity Kv, t/h	Weight, kg
15	110	-	-	147	67	0,45	2,8
20	120	-	-	147	67	0,45	2,8
25	135	100	84	200	127	0,5	4,0
40	250	130	115	255	125	2,5	14,5
50	250	141	123	265	145	2,5	15,5



5. OPERATING INSTRUCTIONS

5.1. ELEPHANT STF2131K-T condensate traps require no special maintenance. The scope and intervals of maintenance are determined by the operating organisation based on the operating conditions.

5.2. Suitable shut-off valves should be provided to ensure that the required section of the pipeline can be safely shut off for any work to be carried out on it.

5.3. When traps are used in new systems that have not been flushed, it may be necessary to inspect and clean the trap. Before servicing, isolate the section of pipe with the trap and depressurise to zero. Allow the trap to cool down. Ensure that all mating surfaces are clean during assembly.

5.4. Maintenance and repair work can be carried out without removing the trap from the pipework, provided the necessary precautions are observed. Prior to installation, removal and maintenance work, the trap must be disconnected from steam and condensate sources and the system must be depressurised.

5.5. When operating the trap traps, the provisions according to the company's internal regulations must be observed.

6. INSTALLATION INSTRUCTIONS

6.1. Installation, operation and maintenance of condensate traps may be performed by personnel who have learnt the product design, safety rules, requirements of this TP and have skills in working with condensate traps.

6.2. Before installing a condensate trap, the pipework must be cleaned of contaminants by purging. All filters must also be purged if they are installed upstream of the traps.

6.3. It is imperative to check that the trap is installed in the direction of flow. The arrow for the direction of flow of the medium is shown on the product body.

6.4. If there is a possibility that the system may be pressurised above the pressure limit for the condensate drain, make sure that a safety valve is in place.

6.5. If draining to the atmosphere, ensure that condensate is drained to a safe place.



7. TRANSPORT AND STORAGE CONDITIONS

7.1. The condensate traps can be transported in packaging made according to the internal instructions of the company, by any means of transport.

7.2. Storage of condensate traps should ensure conditions that guarantee the following protection of products from mechanical damage and corrosion.

8. UTILISATION

8.1. The product is disposed of in accordance with the procedure established at the enterprise (remelting, burial, resale).



9. WARRANTY OBLIGATIONS

9.1. Warranty period - 12 months from the date of commissioning, but not more than 18 months from the date of sale.

9.2. The warranty applies to equipment installed and used in accordance with the installation instructions and product specifications described in this data sheet.

9.3. The manufacturer guarantees compliance of the product with safety requirements, provided that the consumer complies with the rules of transport, storage, installation and operation.

9.4. The warranty covers all defects caused by the fault of the manufacturer.

9.5. The warranty does not apply:

- parts and materials of the product subject to wear and tear;
- for cases of damage caused by:
 - modifications to the original design of the product;
 - violation of general installation recommendations;
 - faults caused by improper maintenance and storage; improper operation and use of the equipment.

NUMBER. WARRANTY TERMS

9.1. Claims to the quality of the goods may be made during the warranty period.

9.2. Defective products are repaired or exchanged for new ones free of charge during the warranty period. ELEPHANT decides whether to replace or repair the product. The replaced product or its parts resulting from the repair shall become the property of 'ELEPHANT'.

9.3. Costs related to dismantling, installation and transport of the defective product during the warranty period shall not be reimbursed to the Buyer.

9.4. If the claim is unfounded, the Buyer shall pay the costs of diagnostics and expertise of the product.

9.5. Products are accepted for warranty repair (as well as for return) fully assembled.



WARRANTY CARD № _____

№	Product Name	Packs

Name and address of the trading organisation _____

Date of sale _____ Seller's signature _____

Stamp or seal of the trading organisation _____ Acceptance stamp _____

I agree with the terms and conditions of the warranty:

Buyer _____ (signature)

Warranty period - 12 months from the date of commissioning, but not more than 18 months from the date of sale.

For warranty repairs, complaints and product quality claims, please contact ELEPHANT at: Carrer d'Aragó,264,3-1,08007 Barcelona, Spain_E-mail address: sales@valveelephant.com.

When making a complaint about the quality of goods, the buyer shall present the following documents:

1. A free-form application, which shall specify:
 - name of the organisation or full name of the buyer, actual address, contact telephone numbers;
 - name and address of the organisation that carried out the installation;
 - basic parameters of the system in which the product was used;
 - a brief description of the defect.
2. Document confirming the purchase of the product (delivery note, receipt)..
3. Act of hydraulic test of the system in which the product was installed.
4. This completed warranty card.

A note on the return or exchange of goods _____

Date: « ___ » _____ 202__ r. Caption _____

