



Manufacturer of shut-off and control valves

TECHNICAL DATA SHEET

Pneumatic solenoid valve ELEPHANT 4M310-08 series (spool type)



+34 900 433 073, sales@valveelephant.com
Carrer d'Aragó, 264, 3-1, 08007 Barcelona, Spain

GENERAL INFORMATION ABOUT THE PRODUCT

Product Name: Pneumatic solenoid valve Elephant 4M310-08 series (spool type)

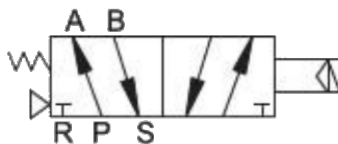
Purpose: Pneumatic solenoid valves are used for control in pneumatic systems having a NAMUR docking surface, for installing distributors through holes in the body. Electromagnetic control is carried out using voltage coils 12VAC, 12VDC, 24VAC, 24VDC, 110VAC. Depending on the model, the distributors have one-way or two-way control. Electromagnetic controlled air valves have a wide range of models and include common types of switching for three (3/2) and five (5/2 and 5/3) linear solenoid valves. Designed for use with quarter-turn pneumatic actuators.

MAIN TECHNICAL DATA AND CHARACTERISTICS

Construction	spool type
Nominal pressure PSI (PN, MPa)	174 (1,2) class 150
Working pressure, PSI (bar)	1,5...8
Working environment	filtered compressed air
Ambient temperature t, °F (°C) of the environment	from +41 to +122 (from +5 to +50)
Response frequency	5 cycles/s
Manual duplication	there is
Degree of protection	IP 65
Bracing	through holes in the body
Housing material	anodized aluminum
Response time	0,05 sec.

FLOW DISTRIBUTION SCHEME

(4M210~4M310)

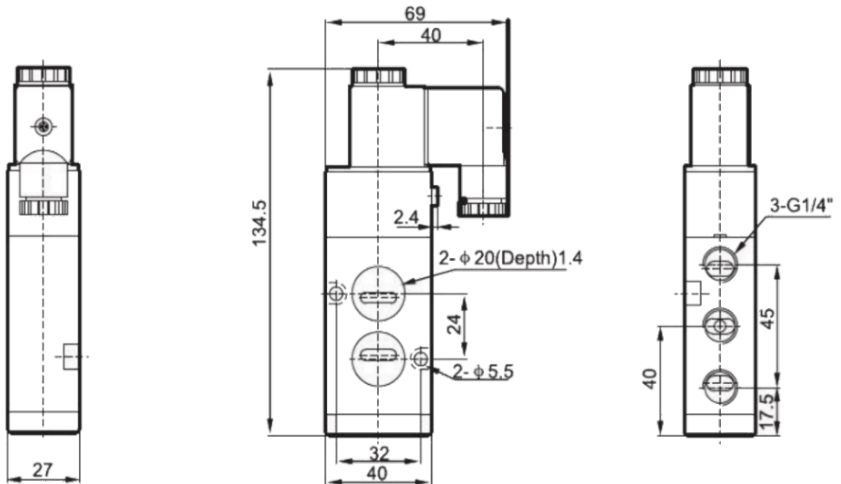


CONDITIONAL DESIGNATION

4	Flow channels (4: 5-channel distributor / 3: 3-channel distributor)
M	Pneumatic solenoid valve series (M: NAMUR)
2	Standard size (2:200 / 3:300)
10	Control (10: one coil)
08	Connection size (06: 1/8 ; 08: 1/4 ; 10: 3/8)
24VDC	Voltage (110VAC / 220VAC /380VAC/ 24VDC /12VDC/ 36VAC / 24VAC / 110VDC/ 48VDC /36VDC)

THE MAIN DIMENSIONS OF THE PNEUMATIC DISTRIBUTOR

4M310-08



WARRANTY PERIOD

The manufacturer guarantees the operability of the product for 12 months from the date of commissioning, but not more than 14 months from the date of sale.

The warranty does not apply:

- for parts and materials of the product subject to wear;
- in cases of damage or accidents caused by:
 - making changes to the original design of the product;
 - violations of general installation recommendations;
 - malfunctions caused by improper maintenance and storage;
 - improper operation and use of the equipment.

MARK OF SALE

Nº in order	Name	Quantity

Date of sale: _____

M.P.

