

TECHNICAL DATA SHEET

CLAMP ELEPHANT UC-31-W-x DN15-100 10 bar
stainless steel, welded



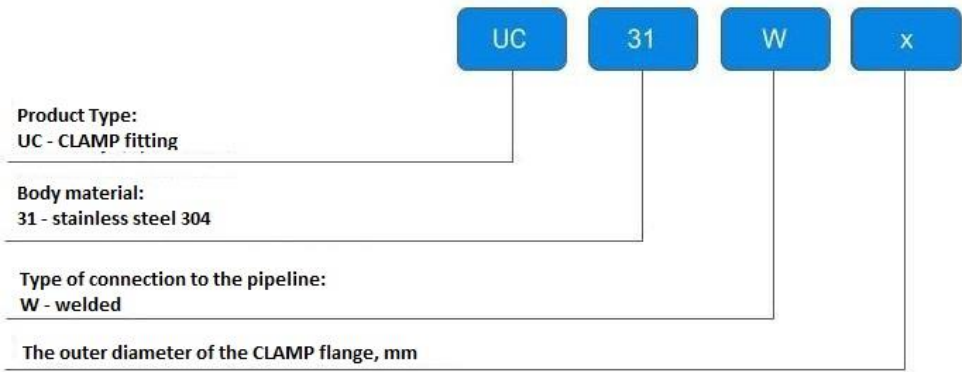
1. GENERAL PRODUCT INFORMATION

1.1. Product name: Connection CLAMP ELEPHANT UC-31-W-x DN15-100 10 bar stainless steel, welded on.

1.2. Purpose: The CLAMP socket is an element of the CLAMP quick coupling, with a rolled part for clamping on one side and an end part for welding on the other side. The CLAMP connection is used in pipeline sections where quick assembly/disassembly of elements is required. This connection is designed for many coupling and uncoupling cycles.



1.3. Deciphering of the designation:



2. BASIC TECHNICAL DATA AND CHARACTERISTICS

Table 1

Nominal diameter DN, mm	15–100
Nominal pressure, bar	10
Operating medium temperature t, °C	the temperature range of the working medium is set according to the permissible temperature range of the seal used
Operating medium	water, steam, gas, petroleum products, acids
Housing material	stainless steel AISI 304
Pipeline connection	welding / CLAMP
Areas of application	food, pharmaceutical industry
Average service life, years	10



3. WEIGHT AND DIMENSIONAL PARAMETERS

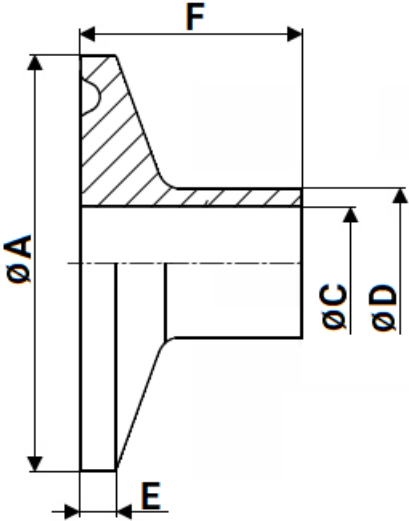


Table 2

	ØA, mm	ØC, mm	ØD, mm	E, mm	F, mm	Weight, g
DN15	34	15	18	2,85	18	30,28
DN20	34	19	22	2,85	18	28,68
DN25	50,5	25	28	2,85	21,5	69,6
DN32	50,5	31	34	2,85	21,5	60,86
DN40	50,5	37	40	2,85	21,5	51,06
DN50	64	49	52	2,85	21,5	72,84
DN65	91	66	70	2,85	28	191,78
DN80	106	81	85	2,85	28	234,8
DN100	119	100	104	2,85	28	233,8



4. TRANSPORTATION AND STORAGE CONDITIONS

4.1. When transporting CLAMP fittings, the packaging must ensure their safety from mechanical damage, safety and convenience during loading and unloading operations and transportation of the products.

4.2. It is allowed to transport the bends without packing provided that they are protected from mechanical damage.

4.3. Storage conditions must comply with the group of storage conditions According to the internal instructions of the company.

5. UTILIZATION

5.1. The product is disposed of in accordance with the procedure established at the enterprise (remelting, burial, resale).



6. WARRANTY OBLIGATIONS

6.1. Warranty period - 12 months from the date of commissioning, but not more than 18 months from the date of sale.

6.2. The warranty applies to equipment installed and used in accordance with the installation instructions and product specifications described in this data sheet.

6.3. The manufacturer guarantees compliance of the product with safety requirements, provided that the consumer complies with the rules of transport, storage, installation and operation.

6.4. The warranty covers all defects caused by the fault of the manufacturer.

6.5. The warranty does not apply:

- parts and materials of the product subject to wear and tear;
- for cases of damage caused by:
 - modifications to the original design of the product;
 - violation of general installation recommendations;
 - faults caused by improper maintenance and storage; improper operation and use of the equipment.

7. WARRANTY TERMS

7.1. Claims to the quality of the goods may be made during the warranty period.

7.2. Defective products are repaired or exchanged for new ones free of charge during the warranty period. ELEPHANT decides whether to replace or repair the product. The replaced product or its parts resulting from the repair shall become the property of 'ELEPHANT'.

7.3. Costs related to dismantling, installation and transport of the defective product during the warranty period shall not be reimbursed to the Buyer.

7.4. If the claim is unfounded, the Buyer shall pay the costs of diagnostics and expertise of the product.

7.5. Products are accepted for warranty repair (as well as for return) fully assembled.



WARRANTY CARD №_____

№	Product Name	Packs

Name and address of the trading organisation

Date of sale _____ Seller's signature _____

Stamp or seal of the trading organisation

Acceptance stamp

I agree with the terms and conditions of the warranty:

Buyer _____ (signature)

Warranty period - 12 months from the date of commissioning, but not more than 18 months from the date of sale.

For warranty repairs, complaints and product quality claims, please contact ELEPHANT at: Carrer d'Aragó,264,3-1,08007 Barcelona, Spain_E-mail address: sales@valveelephant.com.

When making a complaint about the quality of goods, the buyer shall present the following documents:

1. A free-form application, which shall specify:

- name of the organisation or full name of the buyer, actual address, contact telephone numbers;
- name and address of the organisation that carried out the installation;
- basic parameters of the system in which the product was used;
- a brief description of the defect.

2. Document confirming the purchase of the product (delivery note, receipt)..

3. Act of hydraulic test of the system in which the product was installed.

4. This completed warranty card.

A note on the return or exchange of goods _____

Date: « ____ » _____ 202__ r. Caption _____

